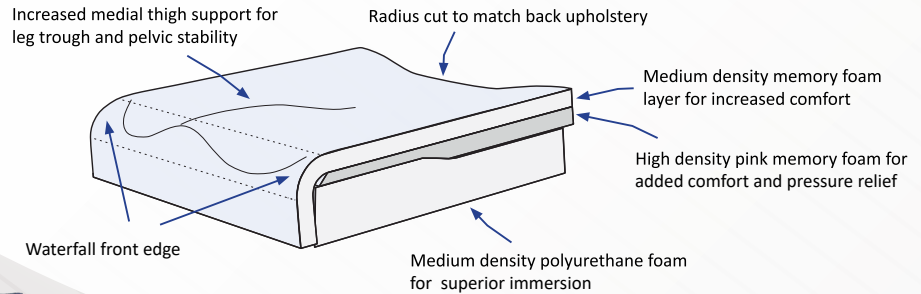




# Supreme II

The Prism Supreme™ was designed for users requiring moderate to high positioning support and provides excellent pressure distribution relief. The anatomically designed firm polyurethane base, with its aggressive leg troughs and abductor contouring, provides superior pelvic stability and leg positioning. A central core of pressure relieving visco-elastic insert under the IT's (Ischial Tuberosity), allows for excellent immersion for bony prominences.



**Custom Sizes - Shipment within 7 business days**

**ADP CODE: SESFM0025**

Part Number	Size
SCCUS	Custom

**Non-Stock Sizes – Shipment within 3 business days**

**ADP CODE: SESFM0020**

Part Number	Size	Part Number	Size
SC1516	15" x 16"	SC1916	19" x 16"
SC1518	15" x 18"	SC1918	19" x 18"
SC1620	16" x 20"	SC1920	19" x 20"
SC1716	17" x 16"	SC2016	20" x 16"
SC1718	17" x 18"	SC2018	20" x 18"
SC1720	17" x 20"	SC2020	20" x 20"

**Stock Sizes – Same Day Shipment**

**ADP CODE: SESFM0015**

Part Number	Size	Part Number	Size
SC1414	14" x 14"	SC1618	16" x 18"
SC1416	14" x 16"	SC1818	18" x 18"
SC1616	16" x 16"	SC1820	18" x 20"

# Product Highlights

- 3" of visco foam (memory foam) under IT's (Ischial Tuberosity) for superior immersion
- High density, contour cut layered foam for a consistent, long lasting product
- 4-way stretch, water resistant inner liner
- Radius cut to match shape of back upholstery
- 4-way stretch, breathable outer cover

- Waterfall front edge for foot propelling comfort
- Cane cutout in rear to allow for correct placement in wheelchair and proper seat dept

Product Weight: 3.5 lbs

User Weight: 250 lbs

Warranty: Two (2) years limited on cushion and 90 days on the cover.

## Supreme Modifications

Part Number	Size	Part Number	Size
<b>SLDL1</b>	Left 1"	<b>SLDR1</b>	Right 1"
<b>SLDL2</b>	Left 2"	<b>SLDR2</b>	Right 2"

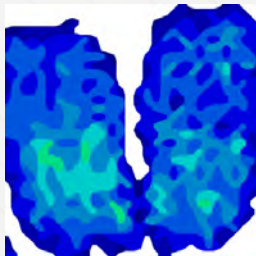
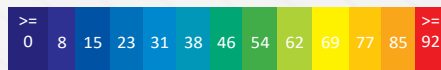
## Pelvic Obliquity Build-Up

Part Number	Size	Part Number	Size
<b>POBL.5</b>	Left 1/2"	<b>POBR.5</b>	Right 1/2"
<b>POBL1</b>	Left 1"	<b>POBR1</b>	Right 1"
<b>POBL1.5</b>	Left-1-1/2"	<b>POBR1.5</b>	Right 1-1/2"

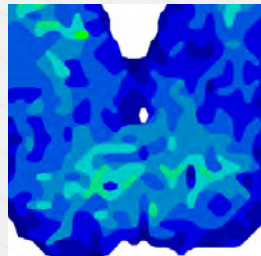
## Best Used For:

Adv. Weight Distribution  
Heat Management  
Extended Length Use  
Adv. Positioning Needs  
Maintain Skin Integrity  
Asymmetrical Posture

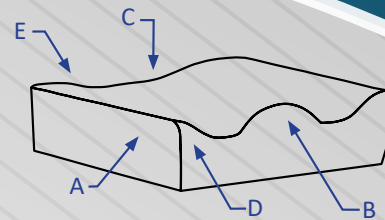
Pressure Reading Scale in mmHG



Pressure Map	Supreme II
Weight	125 Lbs/57 Kg
Duration	1 hr
Average Pressure	25 mmHg

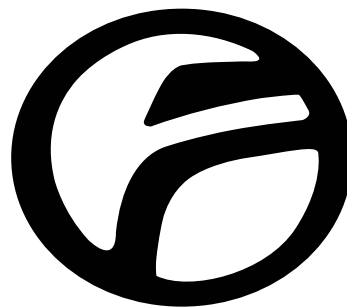


Pressure Map	Supreme II
Weight	200 Lbs/91 Kg
Duration	1 hr
Average Pressure	30 mmHg



## CUSHION THICKNESS

- A- Height at adductor = 5"
- B- Height at abductor = 5"
- C- Height at rear IT = 3 1/4"
- D- Leg Trough = 3 1/4"
- E- Height at rear trochanter = 4 1/4"



**FUTURE MOBILITY**

**CANADA**

6750 Professional Court, Mississauga, L4V1X6

1-888-737-4011

[www.futuremobility.ca](http://www.futuremobility.ca)

**USA**

11126 Greenstone Ave, Santa Fe Springs, CA 90670

716-783-9130

[www.futuremobility.com](http://www.futuremobility.com)