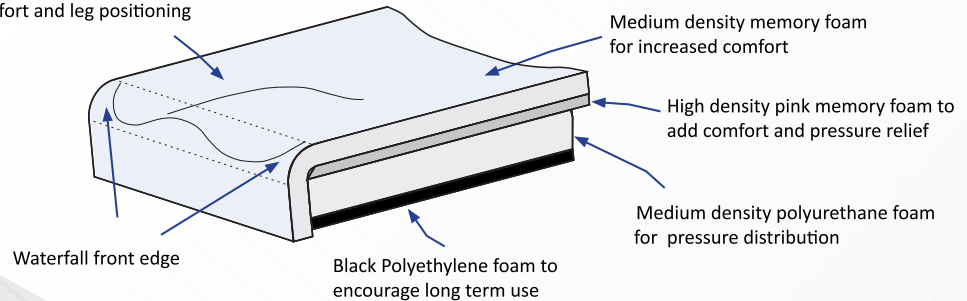




# Prism Elite

The Prism Elite Cushion™ was designed for users that require moderate postural support and offers gentle contours helping to promote correct seating posture. A top layer of soft, comfortable visco foam, along with the visco and medium density polyurethane foam, offers pressure distribution and relief.

Slight medial thigh support for added comfort and leg positioning



### Custom Sizes - Shipment within 7 business days

ADP CODE: SESFM0065

Part Number	Size
ECCUS	Custom

### Stock Sizes – Same Day Shipment

ADP CODE: SESFM0060

Part Number	Size	Part Number	Size
EC1616	16" x 16"	EC1818	18" x 18"
EC1618	16" x 18"	EC2016	20" x 16"
EC1816	18" x 16"	EC2018	20" x 18"

### Non-Stock Sizes – Shipment within 3 business days

ADP CODE: SESFM0060

Part Number	Size	Part Number	Size
EC1620	16" x 20"	EC1720	17" x 20"
EC1716	17" x 16"	EC1820	18" x 20"
EC1718	17" x 18"	EC2020	20" x 20"

## Product Highlights

- Standard water proof outer cover
- Waterfall front edge for foot propelling
- Lightweight cushion
- Core layer of visco-elastic foam (memory foam) to provide comfort
- Non-slip bottom on washable incontinent cover
- Promotes moderate postural support
- Slight medial thigh support for positioning

- 4-way stretch, water resistant inner liner
- 4-way stretch, breathable outer cover

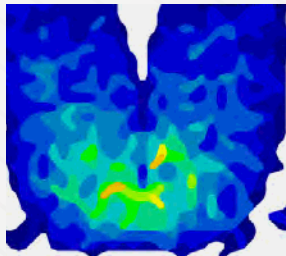
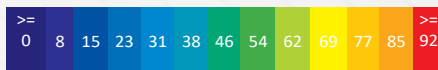
Product Weight: 3.7 lbs

User Weight: 250 lbs

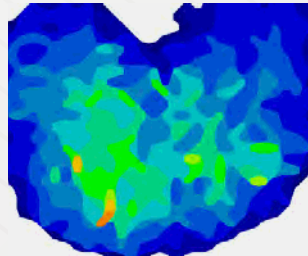
Warranty: Two (2) years limited on cushion and 90 days on the cover.

**Best Used For:**  
 Adv. Weight Distribution  
 Heat Management  
 Extended Length Use  
 Mod. Positioning Needs  
 Maintain Skin Integrity  
 Fixed Posterior Tilt

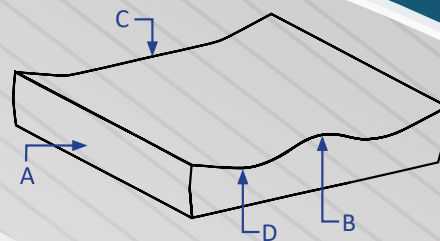
Pressure Reading Scale in mmHG



Pressure Map	Prism Elite
Weight	125 Lbs/57 Kg
Duration	1 hr
Average Pressure	30 mmHg

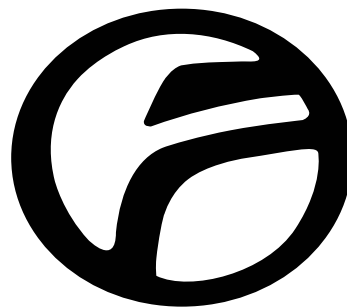


Pressure Map	Prism Elite
Weight	200 Lbs/91 Kg
Duration	1 hr
Average Pressure	31 mmHg



### CUSHION THICKNESS

- A- Height at adductor = 4"
- B- Height at abductor = 4 1/2"
- C- Height at rear IT = 3"
- D- Leg Trough = 3"



**FUTURE MOBILITY**

**CANADA**

6750 Professional Court, Mississauga, L4V1X6

1-888-737-4011

[www.futuremobility.ca](http://www.futuremobility.ca)

**USA**

11126 Greenstone Ave, Santa Fe Springs, CA 90670

716-783-9130

[www.futuremobility.com](http://www.futuremobility.com)