



Supreme II Plus

The Prism Supreme II Plus™ Cushion was designed for users weighing up to 350lbs and requiring high positioning support. The anatomically designed, firm polyurethane layer, with its aggressive leg troughs and abductor contouring provides superior pelvic stability and leg positioning. A base layer of pressure relieving visco-elastic foam under the IT's (Ischial Tuberosity), allows for excellent immersion for bony prominences.

Increased medial thigh support for better leg positioning and pelvic stability

Radius cut to help match shape of back upholstery

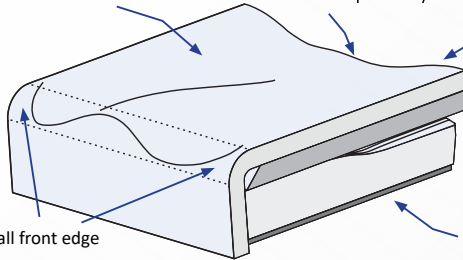
A layer of medium density foam for increased comfort

High density pink memory foam for comfort and pressure relief

Medium density polyurethane foam for superior immersion

A layer of black polyethylene to encourage long term use

Waterfall front edge



Custom Sizes - Shipment within 7 business days

ADP CODE: SESFM0080

Part Number	Size
SCPCUS	Custom

Non-Stock Sizes – Shipment within 3 business days

ADP CODE: SESFM0075

Stock Sizes – Same Day Shipment			
ADP CODE: SESFM0070			
Part Number	Size	Part Number	Size
SCP1414	14" x 14"	SCP1816	18" x 16"
SCP1416	14" x 16"	SCP1818	18" x 18"
SCP1616	16" x 16"	SCP1820	18" x 20"
SCP1618	16" x 18"		

Part Number	Size	Part Number	Size
SCP1516	15" x 16"	SCP1916	19" x 16"
SCP1518	15" x 18"	SCP1918	19" x 18"
SCP1620	16" x 20"	SCP1920	19" x 20"
SCP1716	17" x 16"	SCP2016	20" x 16"
SCP1718	17" x 18"	SCP2018	20" x 18"
SCP1720	17" x 20"	SCP2020	20" x 20"

Product Highlights

- High density, contour cut layered foam for a consistent, long lasting product
- Cane cutout in rear to allow for correct placement in wheelchair and proper seat depth
- Radius cut to match shape of back upholstery
- Layer of visco foam along the bottom for further pressure relief under IT's (Ischial Tuberosity)

- Supreme pressure relief
- Non slip cover
- Standard 4-way stretch, water resistant inner liner
- 4-way stretch, breathable outer cover

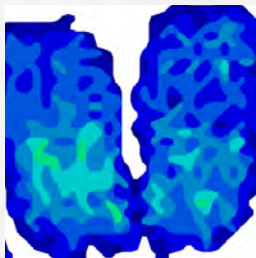
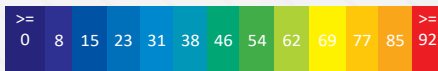
Product Weight: 3.7 lbs

User Weight: 350 lbs

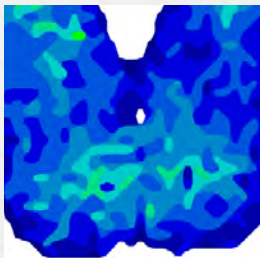
Warranty: Two (2) years limited on cushion and 90 days on the cover.

Best Used For:
 Adv. Weight Distribution
 Heat Management
 Extended Length Use
 Adv. Positioning Needs
 Maintain Skin Integrity
 High Dependency

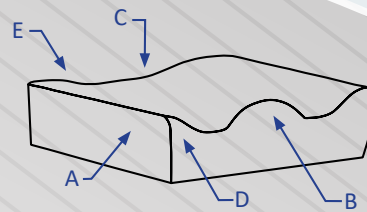
Pressure Reading Scale in mmHG



Pressure Map	Supreme II Plus
Weight	125 Lbs/57 Kg
Duration	1 hr
Average Pressure	25 mmHg

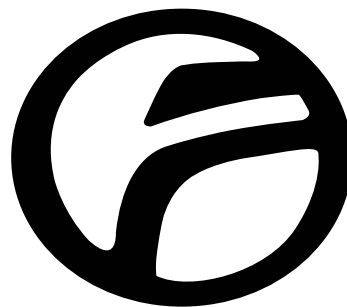


Pressure Map	Supreme II
Weight	200 Lbs/91 Kg
Duration	1 hr
Average Pressure	30 mmHg



CUSHION THICKNESS

- A- Height at adductor = 5"
- B- Height at abductor = 5"
- C- Height at rear IT = 3 1/4"
- D- Leg Trough = 3 1/4"
- E- Height at rear trochanter = 4 1/4"



FUTURE MOBILITY

CANADA

6750 Professional Court, Mississauga, L4V1X6

1-888-737-4011

www.futuremobility.ca

USA

1 Buffalo River Place, Buffalo, NY 14210

1-855-938-8873

www.futuremobility.com